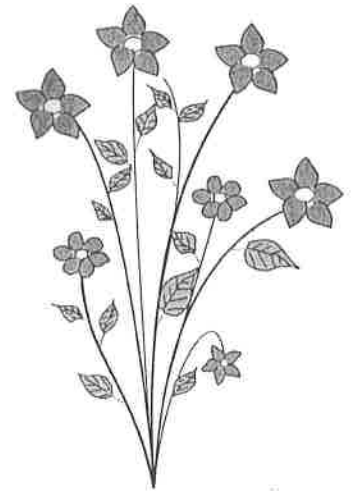


Name \_\_\_\_\_

Period \_\_\_\_\_  
Due date \_\_\_\_\_

# BUILD-A-FLOWER



Flowers are plants known for their aesthetic value. They are useful for important occasions such as weddings and get-well visits. When used as gifts, flowers send heart warming messages. Flowers are also loved for their beauty in landscaping. Landscapers can choose from a vast variety of colors and shapes of annuals and perennials. One of the benefits of perennials is they grow back year after year, providing many seasons of low maintenance flower beds. Annuals, however, increase diversity in landscaping as new flowers are selected and planted each year.

In this laboratory activity, you will examine some common flowers used in landscaping, then you will build your own flower model.

**MATERIALS:** Annual Flowers Picture Pages  
Perennial Flowers Picture Pages

Build-A-Flower Handout  
Crayons  
Scissors  
Glue

## PART 1: PICTURE PAGES

### ANNUAL FLOWERS PICTURE PAGES

1. Look at both pages of pictures. Which flower appeals to you most? \_\_\_\_\_

Why? \_\_\_\_\_

2. AGERATUM is good for: (circle one) MIDDLE OF THE GARDEN BORDERS

3. COLEUS – The leaves are: TOOTHED UNTOOTHED

4. GERBERA DAISIES - What colors are the flowers? \_\_\_\_\_

5. NEW GUINEA IMPATIENS should be planted in: FULL SUN LIGHT SHADE

6. VERBENA – TRUE or FALSE: This plant can tolerate drought \_\_\_\_\_

7. BEGONIAS - “Prized for their \_\_\_\_\_ and \_\_\_\_\_”

8. GERANIUMS – TRUE or FALSE: Geraniums only come in the color red \_\_\_\_\_

9. MARIGOLDS like:        FULL SUN        SHADE

10. PANSIES - “Their \_\_\_\_\_ faces quickly brighten anyone’s \_\_\_\_\_”

## PERENNIAL FLOWER PAGES

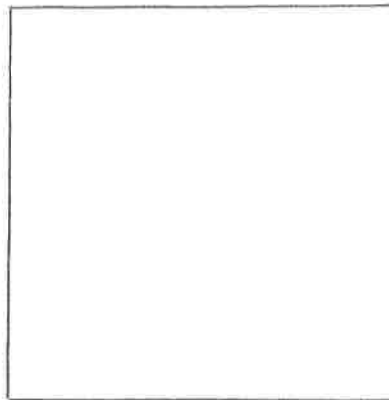
11. Look through the 3 pages of pictures. Which flower appeals to you most? \_\_\_\_\_

Why? \_\_\_\_\_

12. BLACK EYED SUSANS are:        EASY TO GROW        DIFFICULT TO GROW

Leaves are:    WHORLED    BASAL

DRAW one black eyed susan flower here:



13. BLEEDING HEART

Write the scientific name here:

\_\_\_\_\_

TRUE or FALSE: Deer like to eat bleeding hearts \_\_\_\_\_

TRUE or FALSE: Hummingbirds like to visit bleeding hearts \_\_\_\_\_

Why do you think bleeding hearts have their name? \_\_\_\_\_

14. BUTTERFLY BUSH blooms:        ONLY IN JULY        ALL SUMMER

The “100 cultivars” are:        MAN-MADE VARIETIES        VARIETIES IN THE WILD

15. CONEFLOWER - “... with over \_\_\_\_\_ flowers per plant, making it the most  
\_\_\_\_\_ echinacea on the market.”

16. DAYLILY: How tall are the flower stalks?    1 TO 2 FEET        3 TO 4 FEET

Daylilies flower \_\_\_\_\_ in the season  
(EARLY/LATE)

17. FORGET-ME-NOT - Good for:      BORDERS      GROUND COVER

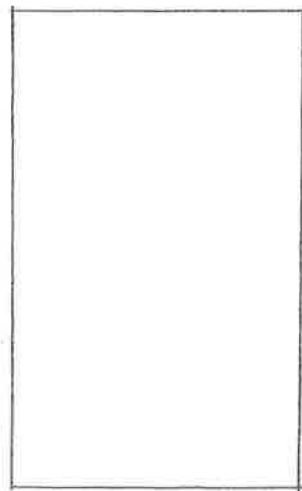
Reproduce asexually using above-ground \_\_\_\_\_

18. FOXGLOVE - Draw the spike of flowers in the picture here:

This variety is a cross (i.e. cultivar) of:

Digitalis \_\_\_\_\_ & Digitalis \_\_\_\_\_

Thought Question: What did the plant breeders transfer from one plant to the other to make a new variety?  
\_\_\_\_\_



19. HUMMINGBIRD PLANT - "The felty grey \_\_\_\_\_ adorn this 20" tall x 3' \_\_\_\_\_,  
heat and drought-loving \_\_\_\_\_ clump.

What does it mean that this bush is "deciduous?" \_\_\_\_\_

20. PEONY - TRUE or FALSE: Deer like to eat peonies \_\_\_\_\_

What color are the stamens? \_\_\_\_\_

21. PRIMROSE has lovely dark \_\_\_\_\_ foliage

Primroses like:      DRY SOIL      MOIST SOIL

How tall is this plant?      5 INCHES      5 FEET

22. SNAPDRAGON "... topped all \_\_\_\_\_ with \_\_\_\_\_ of pink and yellow  
bicolor \_\_\_\_\_."

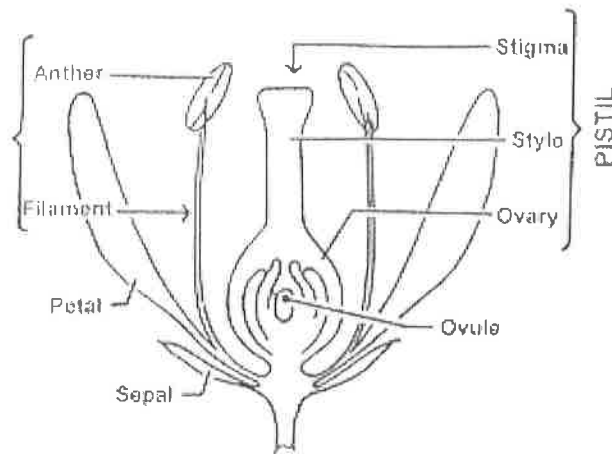
Snapdragon prefers:      FULL SUN      PART SHADE

23. TICKSEED - What is the genus?      COREOPSIS      HELIANTHOIDES

"... is topped with a \_\_\_\_\_ show of \_\_\_\_\_ daisies"

## PART 2: BUILD-A-FLOWER MODEL

1. Follow the directions on the Build-A-Flower handout to construct your own model flower
2. STAPLE your flower model to this lab before you turn it in.



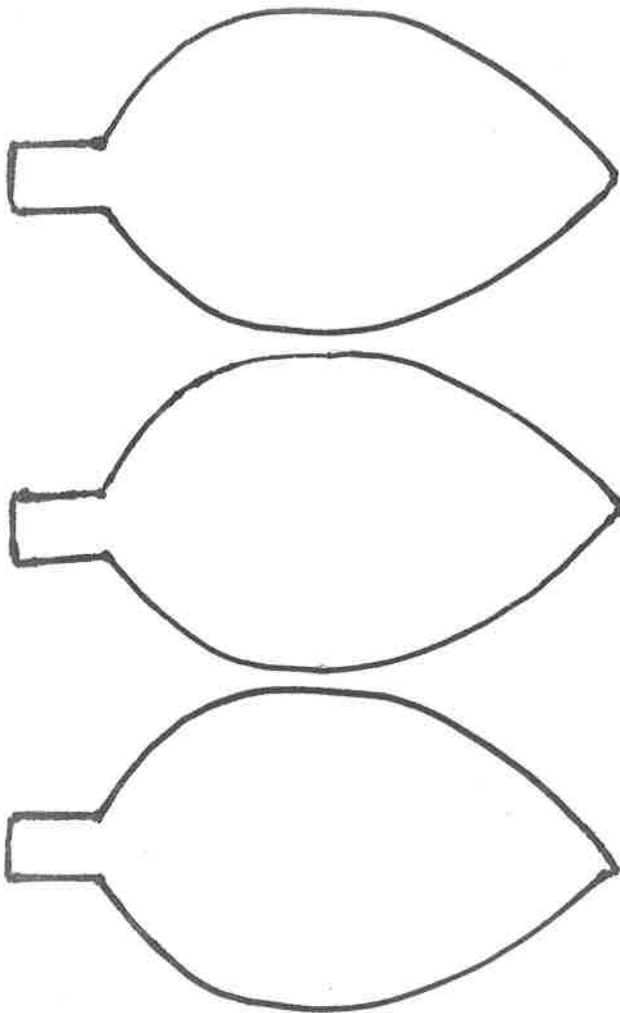
# BUILD-A-FLOWER

1. Label the tube "pedicel" and put your name on it

2. To simulate the "receptacle," wad up a piece of paper towel and fit it snugly into the end of the tube

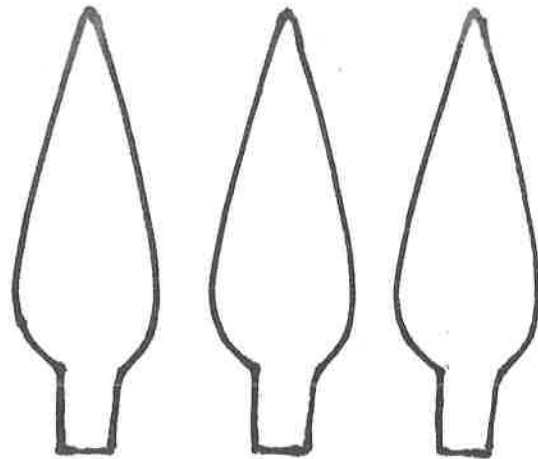
## PETALS

- Label PETAL on all three
- Color the petals with any bright color(s)
- Cut & glue onto the inside of the tube using the tabs



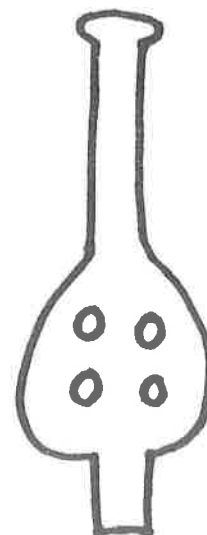
## SEPALs

- Label SEPAL on all three
- Color them GREEN
- Cut & glue them onto the inside of the tube using the tabs



## PISTIL

- Label STIGMA, STYLE and OVARY
- Color the OVULEs black & label one ovule
- Color the pistil any color, then cut it out and glue it into the receptacle using the tab at the bottom



## STAMEN

- Label ANTHHER & FILAMENT on all three
- Color the whole stamen YELLOW
- Cut and glue the stamen onto the receptacle

